



6.000 KN - One Column Swaging Machine

This swaging machine with its 6.000 KN pressing capacity is capable of pressing:

- ZEN[®] 34 (Form A, EN 13411-3), ZEN[®] 38 in Multi-bite
- Flemish Eye 38 (1 ½")



Hydraulic Press 6.000 KN

Technical Data

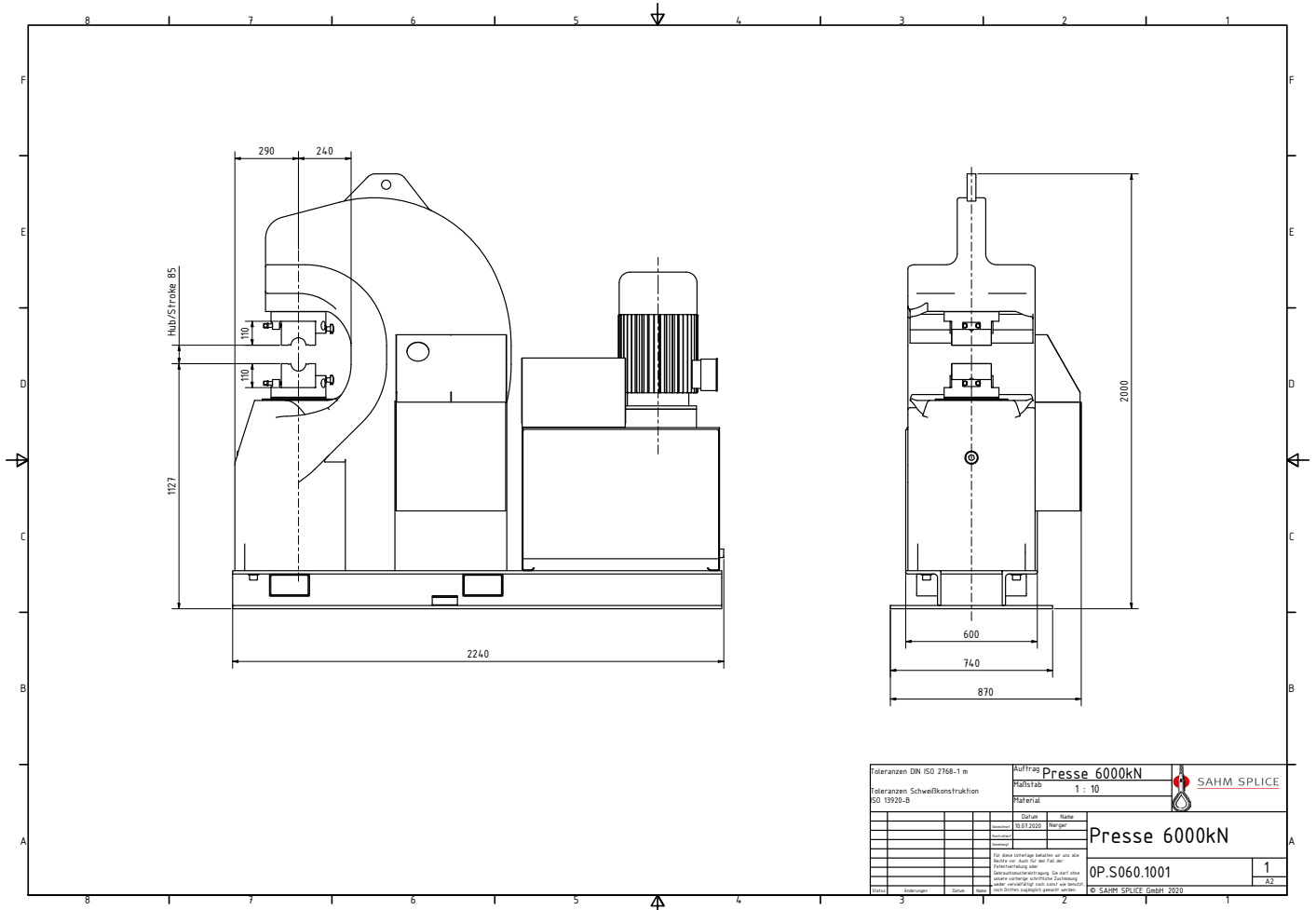
| | |
|---------------------------------------|----------------------------|
| Max. pressure capacity | 6.000 KN |
| Max. piston stroke | 85 mm |
| Max. oil pressure | 413 bar |
| Dimensions (L x W x H) | 2.240 x 870 x 2.000 mm |
| Weight | 4.030 kg |
| Oil capacity | 250 L |
| Max. swaging dies (W x H) | 156 x 110 mm |
| With angle packing (W x H) | 100 x 78 mm / 80 x 78 mm |
| Unloaded stroke speed (up to 1520 kN) | 9,5 mm/s |
| Loaded stroke speed | 2,6 mm/s |
| Reversing speed | 14,3 mm/s |
| Operating height | 1.127 mm |
| Stroke limit | smooth, electronic control |
| Automatic control | ✓ |
| Foot switch | ✓ |
| Power supply | 18,5 KW / 400 V / 50 Hz |

Other voltages on request!

We reserve the right to change technical data!



6.000 KN - One Column Swaging Machine



| | | | | |
|--|--|------------------------------|--|-------------------------|
| Toleranzen DIN ISO 2768-1 m | | Auftrag Presse 6000kN | | SAHM SPLICE |
| Toleranzen Schweißkonstruktion ISO 15926-B | | Maßstab 1 : 10 | | |
| | | Material | | Presse 6000kN |
| | | Datei Name | | |
| | | 10.12.2020 Mengel | | OP.S060.1001 |
| | | | | |
| | | | | 1 |
| | | | | A2 |
| | | | | © SAHM SPLICE GmbH 2020 |