



8.000 KN - Two Column Swaging Machine

This swaging machine with its 8.000 KN pressing capacity is capable of pressing ferrules up to:

- ZEN[®] 40 (Form A, EN 13411-3), ZEN[®] 48 in Multi-bite
- Flemish Eye 44 (1 3/4")



Hydraulic Press 8.000 KN

Technical Data

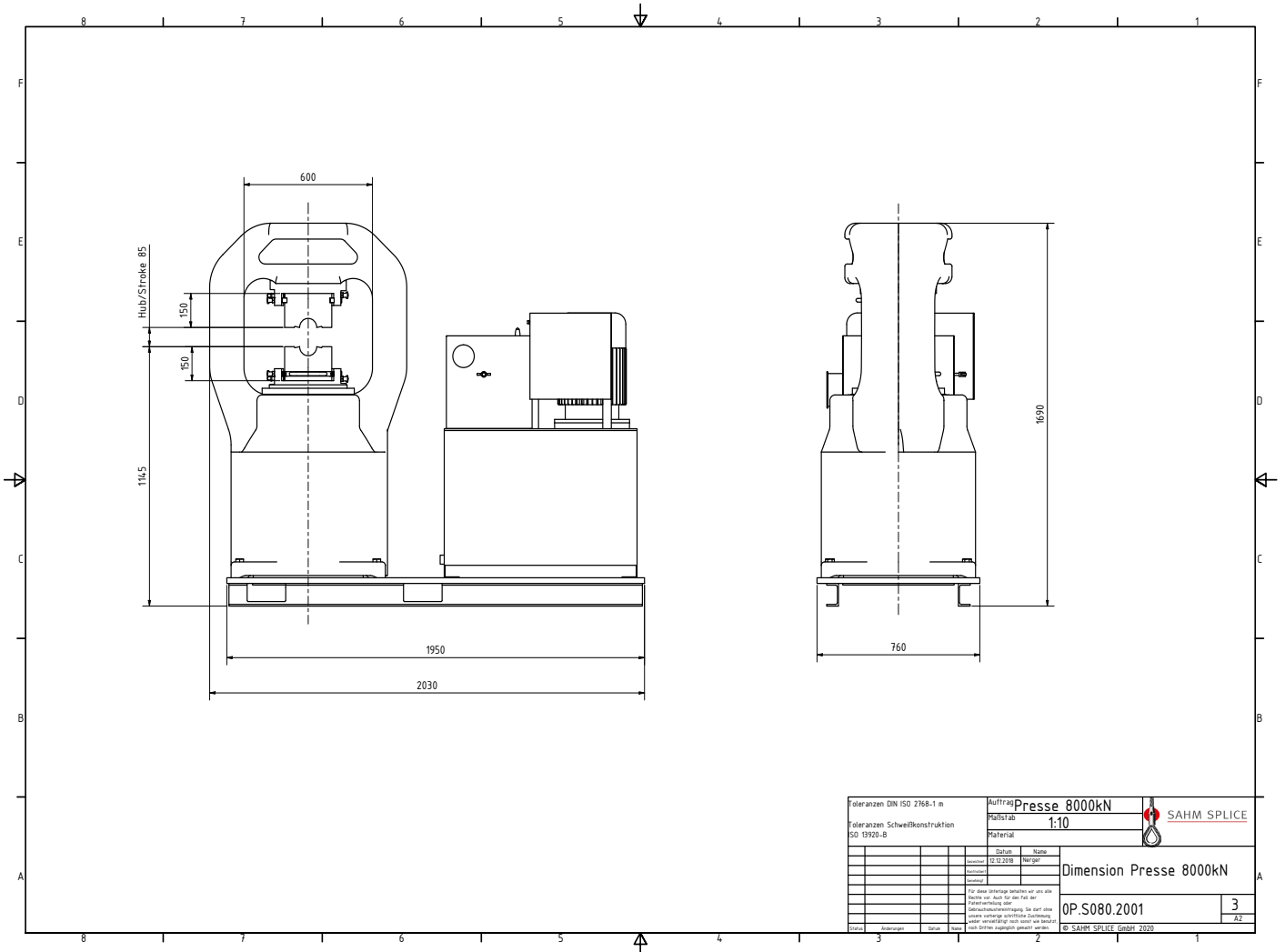
| | |
|---------------------------------------|------------------------|
| Max. pressure capacity | 8.000 KN |
| Max. piston stroke | 85 mm |
| Max. oil pressure | 400 bar |
| Dimensions (L x W x H) | 2.030 x 760 x 1.690 mm |
| Weight | 4.100 kg |
| Oil capacity | 250 L |
| Max. swaging dies (W x H) | 220 x 150 mm |
| With angle packing (W x H) | 156 x 110 mm |
| Unloaded stroke speed (up to 1900 kN) | 5,3 mm/s |
| Loaded press speed | 1,3 mm/s |
| Reversing speed | 11 mm/s |
| Operating height | 1.145 mm |
| Stroke limit | - |
| Automatic control | - |
| Foot switch | ✓ |
| Power supply | 11 KW / 400 V / 50 Hz |

Other voltages on request!

We reserve the right to change technical data!



8.000 KN - Two Column Swaging Machine



| | | | | |
|--|--|------------------------------|--|-------------------------|
| Toleranzen DIN ISO 2768-1 m | | Auftrag Presse 8000kN | | SAHM SPLICE |
| Toleranzen Schweißkonstruktion ISO 15620-2 | | Maßstab 1:10 | | |
| Material | | Datei | | Dimension Presse 8000kN |
| | | Name | | |
| | | Datum | | OP.S080.2001 |
| | | Nr./SP | | |
| | | Zustand | | 3 |
| | | Beschreibung | | |
| | | Gezeichnet | | 32 |
| | | Geprüft | | |
| | | Gezeichnet | | © SAHM SPLICE Ende 2020 |
| | | Geprüft | | |